



ASX: BSR



BASSARIRESOURCES

Investor Presentation

West African gold focus

Building on proven success

January 2012

Disclaimer & Competent Persons Statement

This presentation has been prepared by Bassari Resources Limited (“Company”). It should not be considered as an offer or invitation to subscribe for or purchase any securities in the Company or as an inducement to make an offer or invitation in respect to those securities. No agreement to subscribe for the securities in the Company will be entered into on the basis of the presentation. Bassari Resources Limited makes no representation or warranty (express or implied) as to the accuracy, reliability or completeness of the information.

Bassari Resources Limited and its respective directors, employees, agents and consultants shall have no liability (including liability to any person by reason of negligence or negligent misstatement) for any statements, opinions, information or matters (express or implied) arising out of, contained in or derived from, or any omissions from the Presentation, except liability under statute that cannot be excluded. The presentation contains reference to certain intentions, expectations and plans for Bassari Resources Limited. These intentions, expectations and plans may or may not be achieved. They are based on certain assumptions which may not be met or on which views may differ. The performance and operations of Bassari Resources Limited may be influenced by a number of factors, many of which are outside the control of the Company.

No representation or warranty, express or implied, is made by Bassari Resources Limited or any of its representative directors, officers, employees, advisors, or agents that any intentions, expectations or plans will be achieved either totally or partially or that any particular rate of return will be achieved. Actual results and developments will almost certainly differ materially from those express or purport to be inclusive or to contain all information which its recipients may require in order to make an informed assessment of the Company’s prospects. You should conduct your own investigation and perform your own analysis in order to satisfy yourself as to the accuracy and completeness of the information, statements, and opinions contained in this presentation before making any investment decision.

The information in this presentation that relates to Exploration Results and Mineral Resources has been reviewed and approved by Mr Chris Young who is a Member of the Australasian Institute of Mining and Metallurgy and the Australian Institute of Geoscientists. Mr Young has over 40 years experience in the industry and has more than 5 years experience which is relevant to the style of mineralisation being reported upon to qualify as a Competent Person as defined in the 2004 Edition of the “Australasian Code of Reporting of Exploration Results, Mineral Resources and Ore Reserves”. Mr Young consents to the inclusion in the presentation of the matters based on the information in the form and context to which it appears.

Information in this documentation that relates to Mineral Resources is based on information compiled by Miss T L Burrows, who is a Member of the Australian Institute of Geoscientists and is a full-time employee of AMC Consultants Pty Ltd. Miss Burrows has sufficient experience relevant to the style of mineralisation and type of deposit under consideration and to the activity, which she is undertaking to qualify as a Competent Person as defined in the 2004 Edition of the “Australasian Code for Reporting of Exploration Results, Mineral Resources and Ore Reserves”. Miss Burrows consents to the inclusion in the report of the matters based on her information in the form and context in which it appears.

Investment Highlights

- **Well positioned in a key region of West Africa's Birimian Belt**
 - Kenieba Inlier – 50M ounce gold endowment
 - 80km strike of major crustal shear zone
 - Senegal – politically stable and pro mining
- **Gold discovery at Makabingui Project – 543,000 ounces**
 - 10.8 Mt @ 1.6g/t Au (0.2g/t cut-off) Indicated and Inferred
 - Gold resource is part of a much larger mineralised system
 - Substantial growth potential
- **New Gold Discovery at Konkouto Prospect (50m @ 2.5g/t Au)**
- **Strong potential for significant new gold discoveries with 13 prospects identified**
- **Experienced Board & Management team**

Capital Structure – January 2012

Ordinary shares on issue:	352.6M
Listed options:	
• \$0.20 expire 30 June 2012	19.5M
• \$0.11 expire 30 November 2012	59.3M
Director & Management options:	5.8M
Number of shareholders:	1,758
Top 20 shareholders:	32%
Cash (as at 30 September 2011):	\$3.56M
Market Capitalisation at \$0.05:	\$17.6M

Board and Senior Management

Board

John Ballard – Non-Executive Director

+35 years experience – Corporate, project development, investment banking both international and domestic

Chris Young – Non-Executive Director

+40 years experience – Geologist, exploration and business development

Jozsef Patarica – Managing Director

+20 years experience – Management, project evaluation and exploration

Senior Management

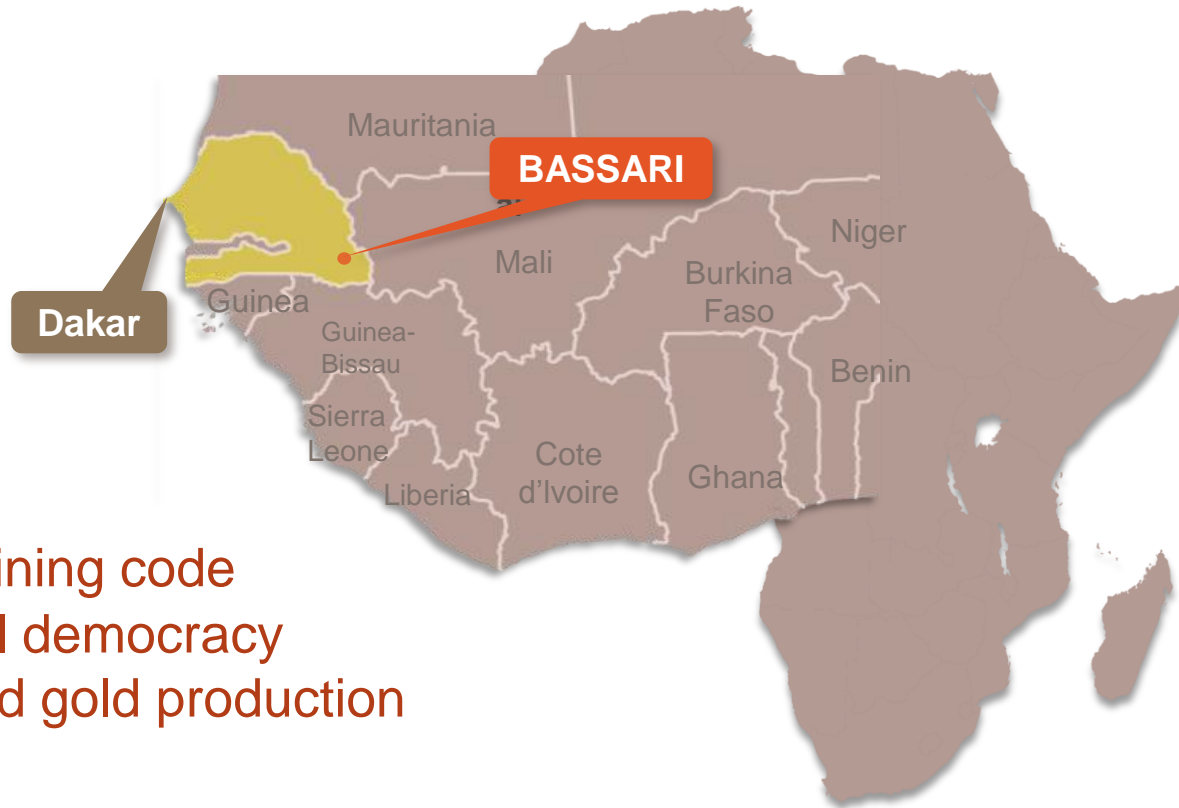
Ian Riley – CFO & Company Secretary

Chartered Accountant with +35 years experience

Moussa Diba – Exploration Manager

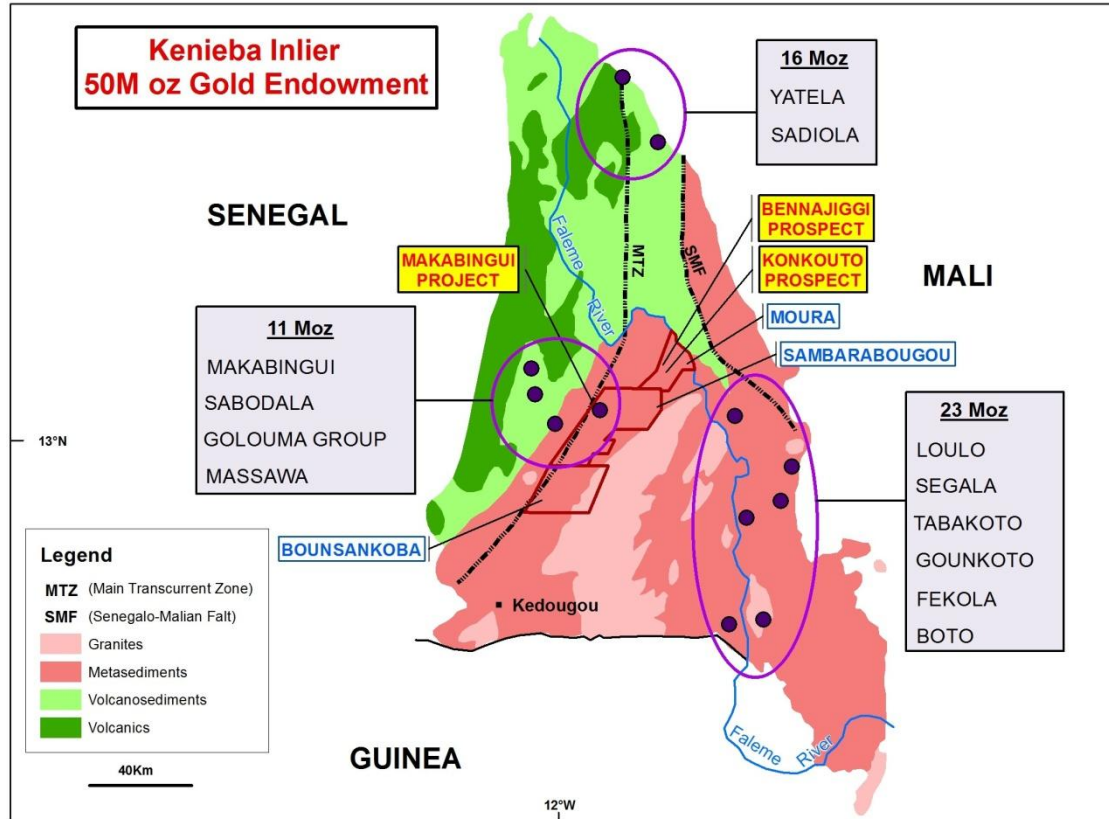
Professional Geologist with +20 years experience

Senegal, West Africa

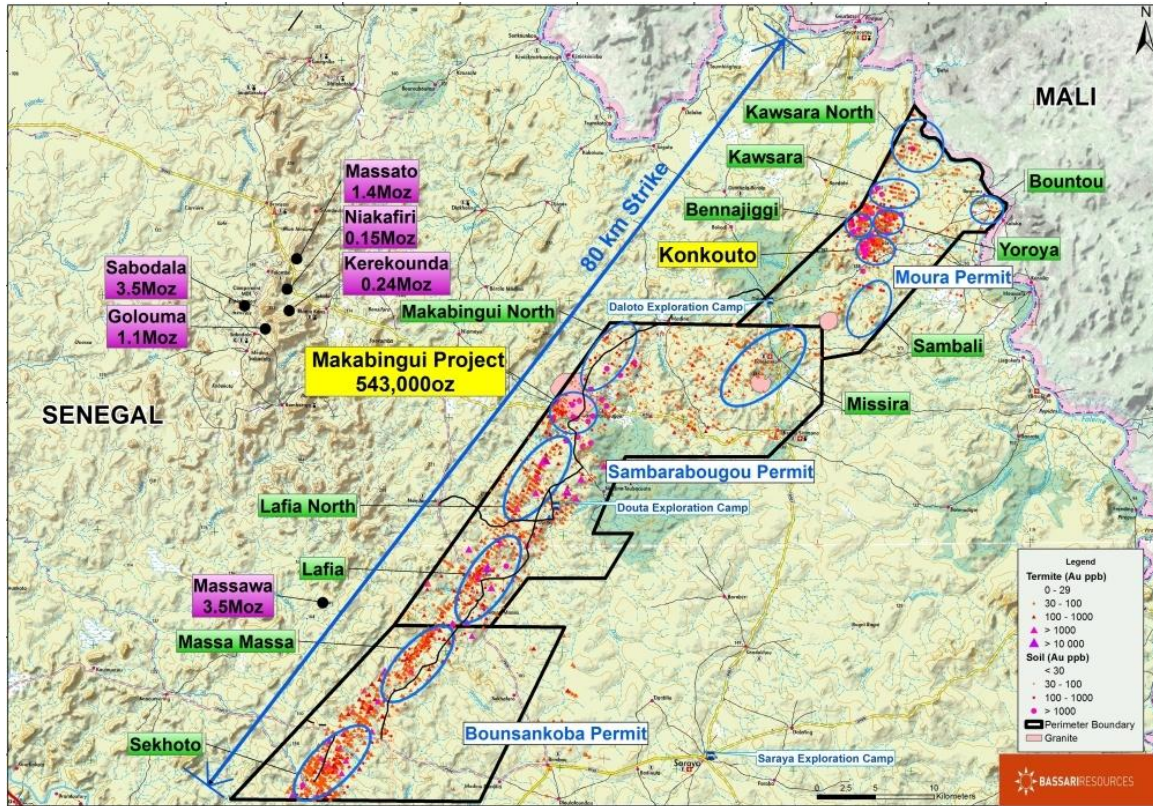


- Modern mining code
- Successful democracy
- Established gold production

West Africa - Kenieba Inlier



Exploration Package



- Makabingui Gold Project
- 13 additional Prospects

Exploration Strategy

Maximise resource growth and expand prospectivity

- **Makabingui Gold Project**

- 543,000 ounces as at December 2011
- Systematic drilling required to expand resource

- **Advancing gold prospects on Moura Permit**

- Konkouto – Further drilling underway to delineate a resource at new discovery
- Bennajiggi – Initial drilling program completed with assays pending

- **Expanding prospectivity – strengthening our resource base**

- Airborne Geophysical Survey - Q1, 2012 to focus exploration priorities
- Drilling programs planned for Kawsara & Sekhoto, Q1 & Q2, 2012
- Further exploration of quality targets

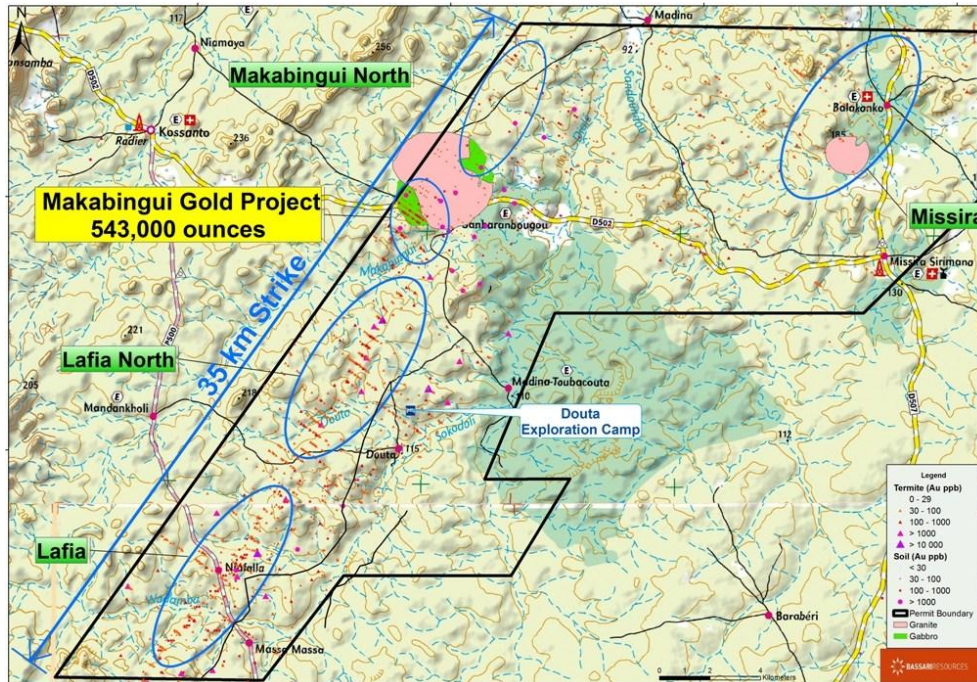
Prospect Pipeline – Next 6 months

Project/Prospect	Feb	Mar	Apr	May	Jun	Jul
Konkouto	RC/DD					
Kawsara		RC				
Sekhoto			RC			
Makabingui				RC/DD	RC/DD	RC/DD

Planned Activities:

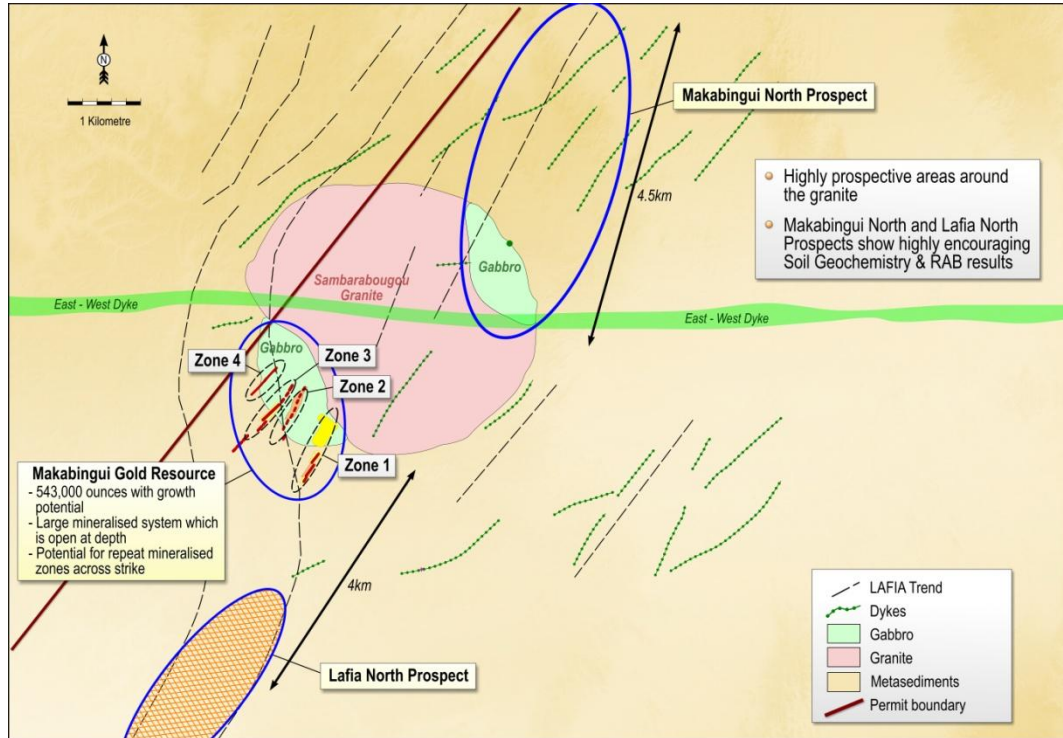
- Airborne Geophysical Survey (AGS) – Q1
- Strategic Exploration Review following AGS – Q1/Q2
- Konkouto RC/DD in progress – drilling to delineate a gold resource
- Kawsara & Sekhoto – initial drilling programs
- Makabingui – resource growth drilling following strategic review

Sambarabougou Permit



- 35km strike - 400km²
- Strong geochemical anomalies along NE trending structures
- Four high-quality targets
- Makabingui Project
 - **543,000 ounces** with excellent upside
- Lafia North Prospect
 - Strong RAB intercepts: 8m @ 12g/t Au, 3m @ 12.2g/t Au, 12m @ 4.8g/t Au
 - Wide spaced RC follow-up: 2m @ 11.4g/t Au, 5m @ 2.0g/t Au, 8m @ 1.4g/t Au
- Extensive artisanal workings

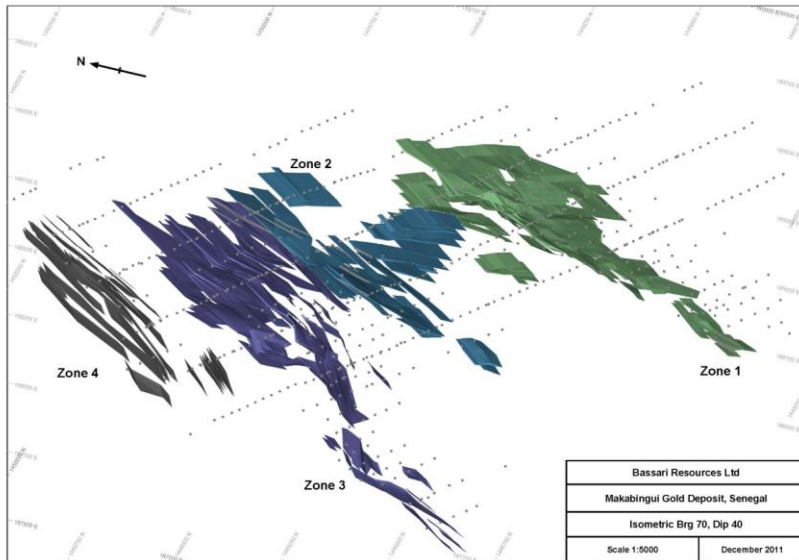
Makabingui Gold Project – New Discovery



Current Resource

- 543,000 ounces (Indicated & Inferred)
 - 10.8 Mt @ 1.6g/t Au (0.2g/t cut-off)
- Inclusive of 503,000 ounces (Indicated & Inferred)
 - 6.1 Mt @ 2.6g/t Au (0.5g/t cut-off)
- High-grade results include:
 - 7m @ 54.3g/t Au (Zone 3)
 - 5m @ 31.7g/t Au (Zone 3)
 - 7m @ 19.2g/t Au (Zone 3)
 - 9m @ 9.7g/t Au (Zone 1)
 - 5m @ 11.0g/t Au (Zone 1)

Makabingui Gold Project



Classification	COG	Tonnage	Au	Au
	Au (g/t)	(Mt)	(g/t)	(oz)
Indicated	0.2	3.5	3.0	335,000
Inferred	0.2	7.4	0.9	208,000
Total	0.2	10.8	1.6	543,000

Containing

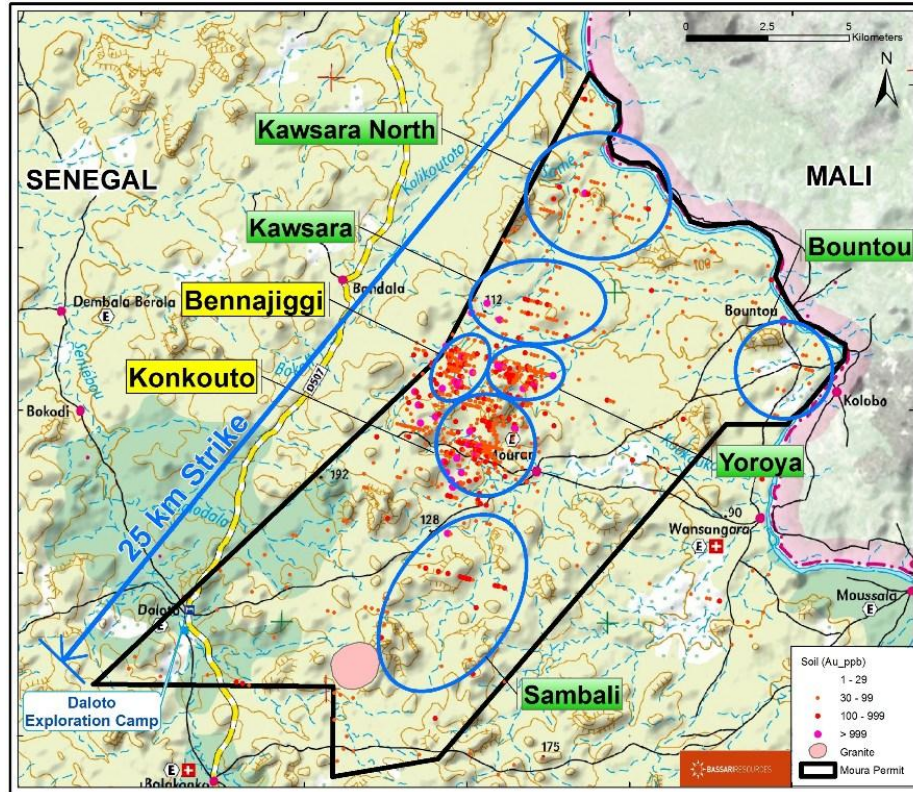
Classification	COG	Tonnage	Au	Au
	Au (g/t)	(Mt)	(g/t)	(oz)
Indicated	0.5	2.7	3.8	328,000
Inferred	0.5	3.4	1.6	175,000
Total	0.5	6.1	2.6	503,000

Substantial resource growth potential

- Shallow depth – defined down to 115m
- Large mineralised system open at depth
- Potential for repeat zones across strike
- Grade improvement

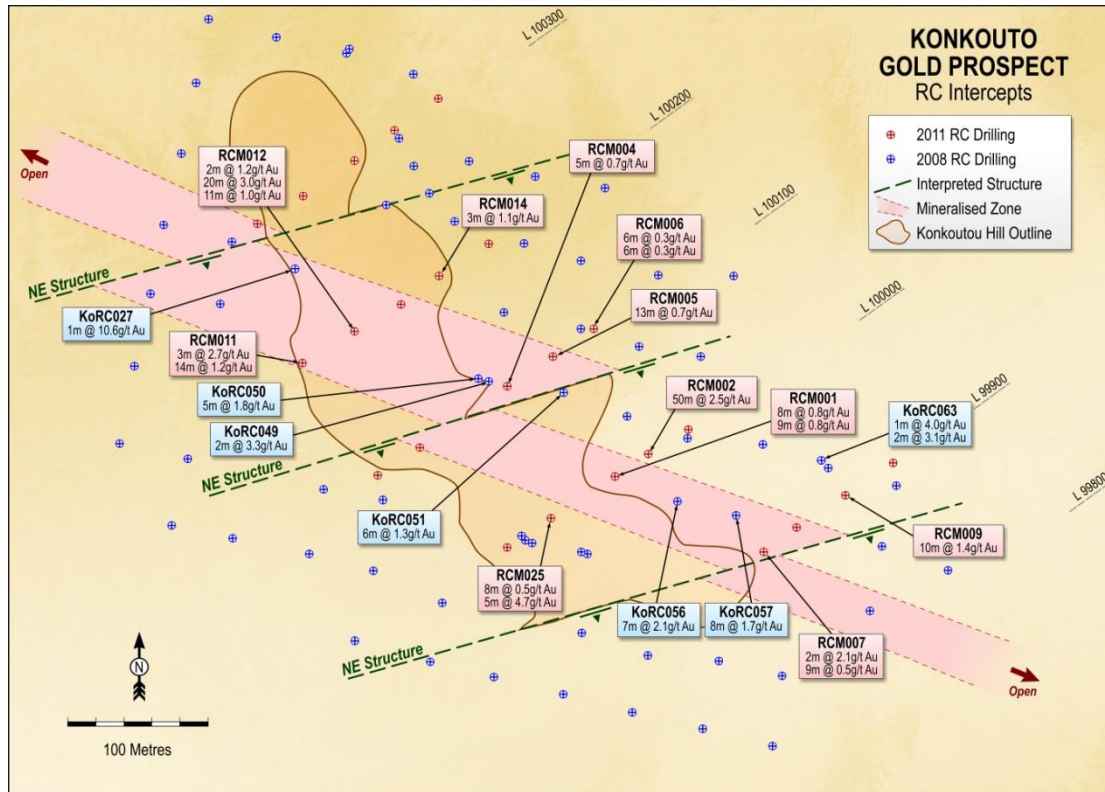
Metallurgical test work - 99% recovery

Moura Permit



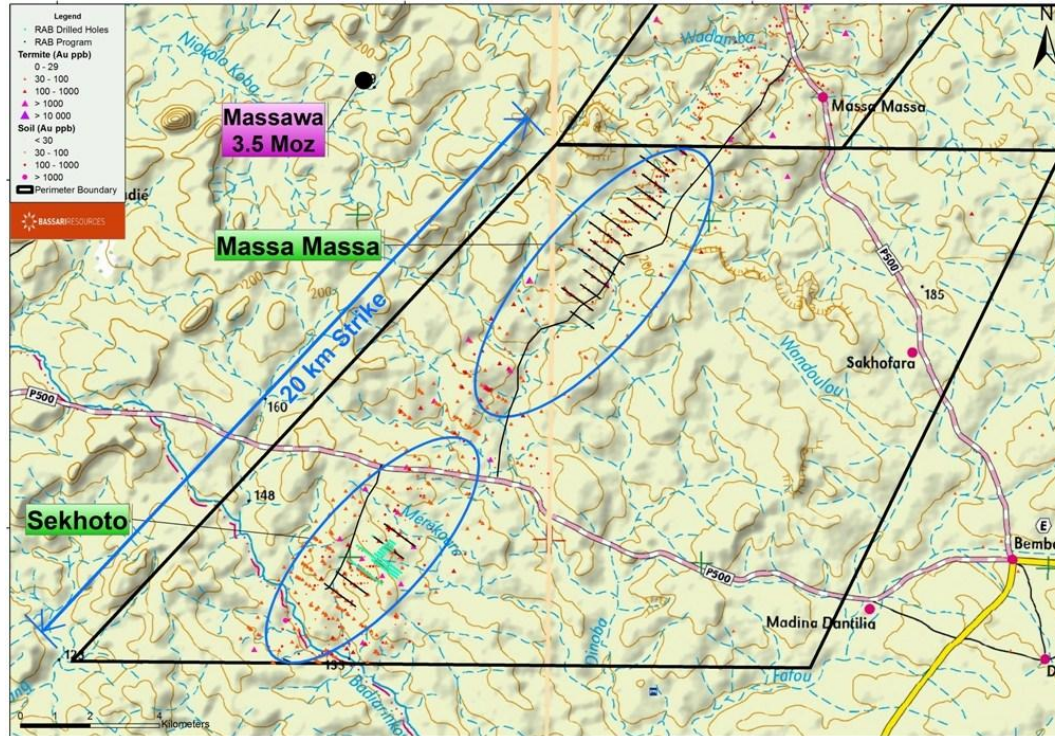
- 25km strike - 184km²
- Strong soil geochemistry
- Extensive artisanal workings
- Seven high-quality prospects
- New gold discovery at Konkouto with further drilling underway
- Initial drilling program completed at Bennajiggi
- Kawsara prospect trench results of 5m @ 5.7g/t Au & 3m @ 3.4g/t Au with RC drilling program in Q1, 2012
- Geological model indicates potential for multiple EW trending dilatational jogs

Moura Permit – Konkouto Prospect



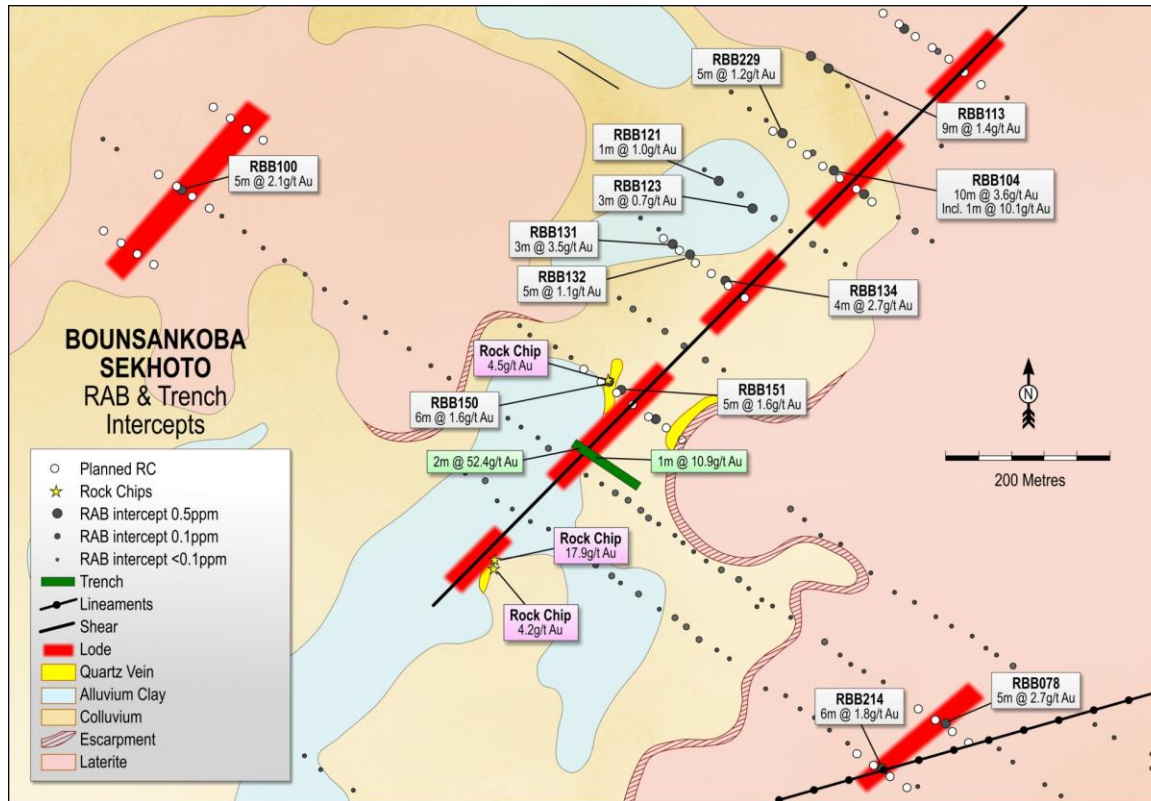
- New significant zone of gold mineralisation discovered over strike length in excess of 600 metres
- Intercepts include 50m @ 2.5g/t Au; 20m @ 3.0g/t Au, 5m @ 4.7g/t Au
- Shallow drilling down to 70m vertical
- Open in both directions and at depth
- Further drilling underway to delineate a resource

Bounsankoba Permit



- 20km strike - 268km²
- Strong geochemical anomaly along NE trending structural zone
- Two high-quality prospects
- Artisanal workings in the area
- Sekhoto prospect initial drilling program planned for Q2, 2012

Bounsankoba Permit – Sekhoto Prospect



Significant RAB drilling results:

- 10m @ 3.6g/t Au
- 4m @ 2.7g/t Au
- 3m @ 3.5g/t Au

Rock chip samples

- up to 17.9g/t Au

Trench samples:

- 2m @ 52.4g/t Au
- 1m @ 10.9g/t Au

Social Contribution



WATER



MEDICAL



SCHOOL

Employment

Better Roads & Infrastructure

Skills Development

Summary

- Strategic land package in key region of West Africa's Birimian Belt
- Proven success at Makabingui – 543,000 ounces with substantial resource growth potential
- New Gold Discovery at Konkouto with further drilling underway to delineate a resource
- Near term activities include airborne geophysical survey across all permits and drilling at our highest priority targets
- Strong potential for significant further gold discoveries with 13 prospects identified
- Experienced Board and Management team

Contact Information

Bassari Resources Limited

Level 17, 500 Collins Street

Melbourne, Victoria 3000

Telephone: +61 3 9614 0600

Facsimile: +61 3 9614 0550

Email admin@bassari.com.au

Website: www.bassari.com.au