



BASSARIRESOURCES

Investor Presentation

July 2011

Jozsef Patarica

Managing Director/CEO



ASX: BSR

Disclaimer



This presentation has been prepared by Bassari Resources Limited (“Company”). It should not be considered as an offer or invitation to subscribe for or purchase any securities in the Company or as an inducement to make an offer or invitation in respect to those securities. No agreement to subscribe for the securities in the Company will be entered into on the basis of the presentation. Bassari Resources Limited makes no representation or warranty (express or implied) as to the accuracy, reliability or completeness of the information.

Bassari Resources Limited and its respective directors, employees, agents and consultants shall have no liability (including liability to any person by reason of negligence or negligent misstatement) for any statements, opinions, information or matters (express or implied) arising out of, contained in or derived from, or any omissions from the Presentation, except liability under statute that cannot be excluded. The presentation contains reference to certain intentions, expectations and plans for Bassari Resources Limited. These intentions, expectations and plans may or may not be achieved. They are based on certain assumptions which may not be met or on which views may differ. The performance and operations of Bassari Resources Limited may be influenced by a number of factors, many of which are outside the control of the Company.

No representation or warranty, express or implied, is made by Bassari Resources Limited or any of its representative directors, officers, employees, advisors, or agents that any intentions, expectations or plans will be achieved either totally or partially or that any particular rate of return will be achieved. Actual results and developments will almost certainly differ materially from those express or purport to be inclusive or to contain all information which its recipients may require in order to make an informed assessment of the Company’s prospects. You should conduct your own investigation and perform your own analysis in order to satisfy yourself as to the accuracy and completeness of the information, statements, and opinions contained in this presentation before making any investment decision.

The information in this presentation that relates to Exploration Results and Mineral Resources is based on information compiled by Dr D S Tyrwhitt who is a Fellow of the Australasian Institute of Mining and Metallurgy and has 50 years experience in the industry and has more than 5 years experience which is relevant to the style of mineralisation being reported upon to qualify as a Competent Person as defined in the 2004 Edition of the “Australasian Code of Reporting of Exploration Results, Mineral Resources and Ore Reserves”. Dr Tyrwhitt consents to the inclusion in the presentation of the matters based on the information in the form and context to which it appears.

Investment Highlights

**Birimian Gold Belt
Senegal West Africa**

Thirteen prospects

**Makabingui Gold Resource
with strong growth
potential along strike.**

Quality ground holding

**Significant exploration
upside**

**Senegal – Stable
democracy since 1960.**

**Targeting multimillion
ounce gold deposits**

**75 km strike length along 3
contiguous permits ~1,000
km²**

**Maiden 240,000 ounce
announced 2nd May 2011.
Resource Upgrade planned
Q4 - 2011**

**Surrounded by multi-million
ounce gold deposits.**

**Multiple opportunities for
success with a highly
skilled team to deliver.**

**Capital – Dakar, Modern
Mining Code.**

“Bassari is focused on discovering multimillion ounce gold deposits in the Birimian Gold Belt, Senegal, West Africa.”

Focused Exploration Program – driven by results

- Significant success with maiden Makabingui Gold Resource announced 2 May 2011.
 - High grades and strong understanding of the geological model.
 - Drilling continuing to unlock the larger potential.
 - Resource value alone well above current market capitalisation.
 - Develop additional Prospects along 75 km strike on three contiguous permits.
 - Leverage off existing infrastructure in Country.
 - 25,000 RC/DD & 30,000 RAB metres planned over next 9 months.
-

Senegal, West Africa



Successful democracy

Stable political environment

Modern mining code

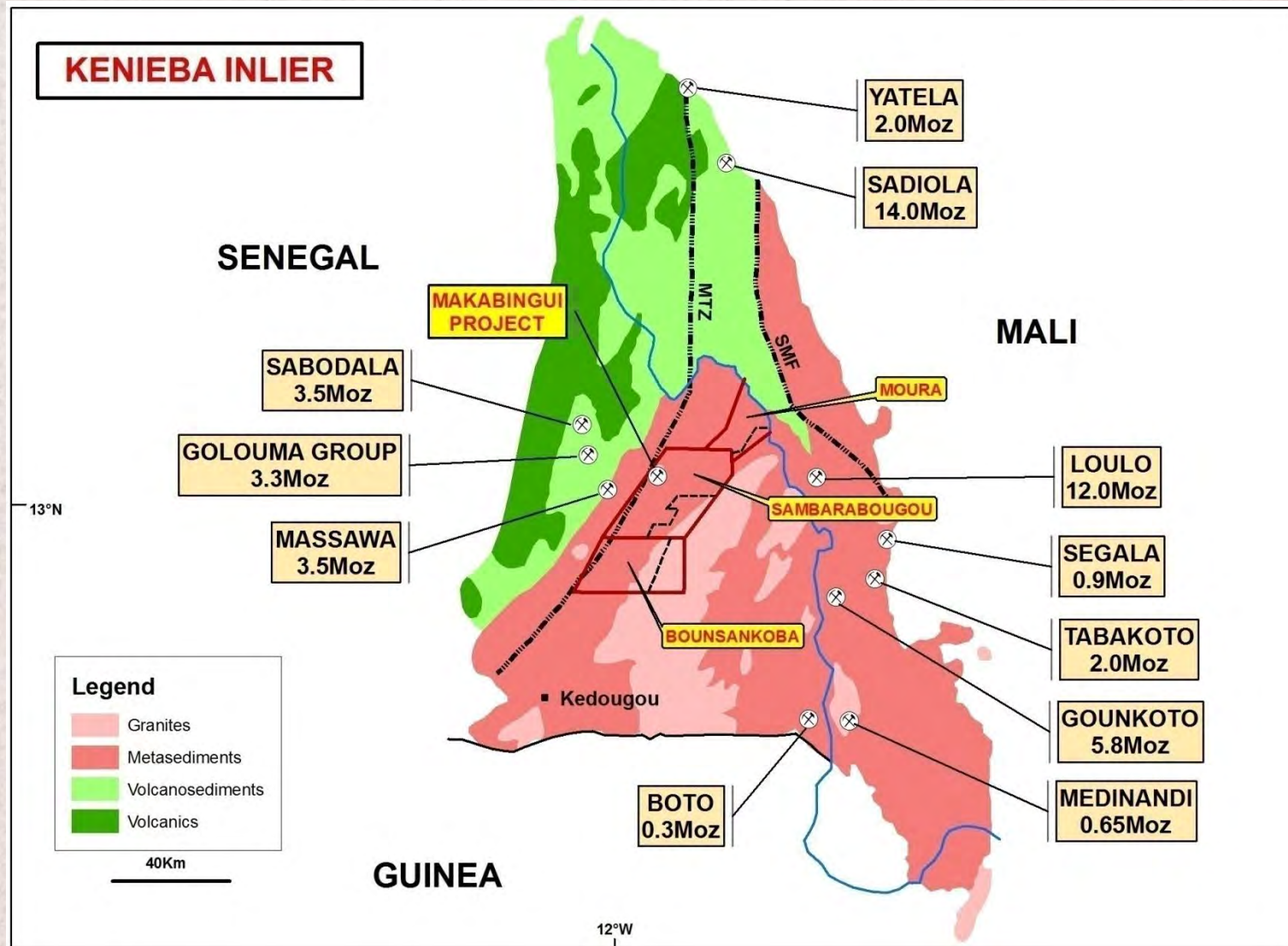
Capital - Dakar

West Africa – The Place To Be!

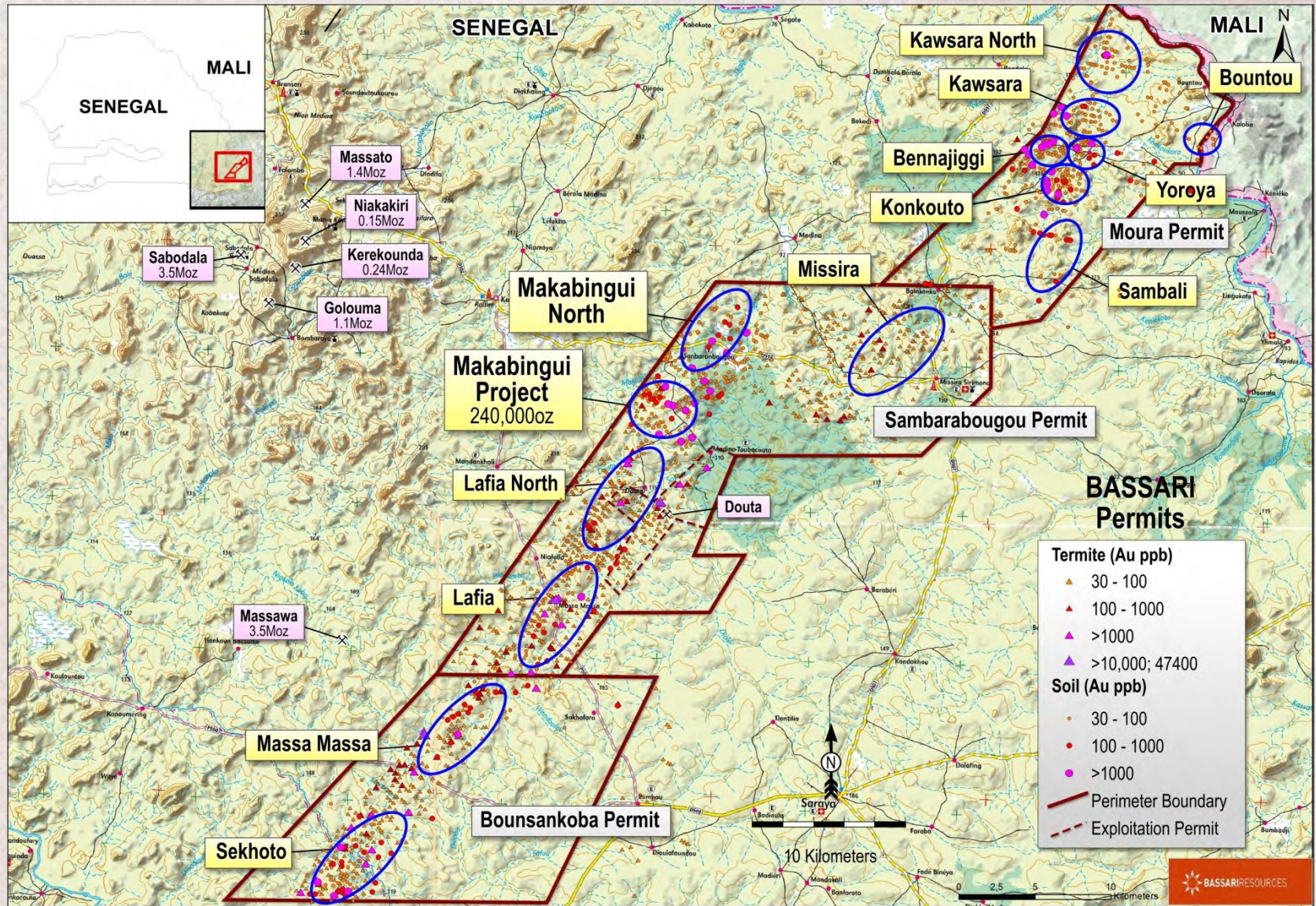


“Gold Hot Spot”

West Africa – Kenieba Inlier



Thirteen Prospects ~1,000 km²



Makabingui Gold Project

Priority Project for the current exploration program to expand resource.

3,270,000 Tonnes at 2.3 g/t Au for 240,000 ounces.

Near Surface

Open Pit Potential

Strong growth potential

Open along strike and depth

Resource drilling continuing

Planned Resource upgrade Q4 - 2011

Metallurgy

High recoveries – 99%

Sambarabougou Granite Contact

Additional Resource Potential

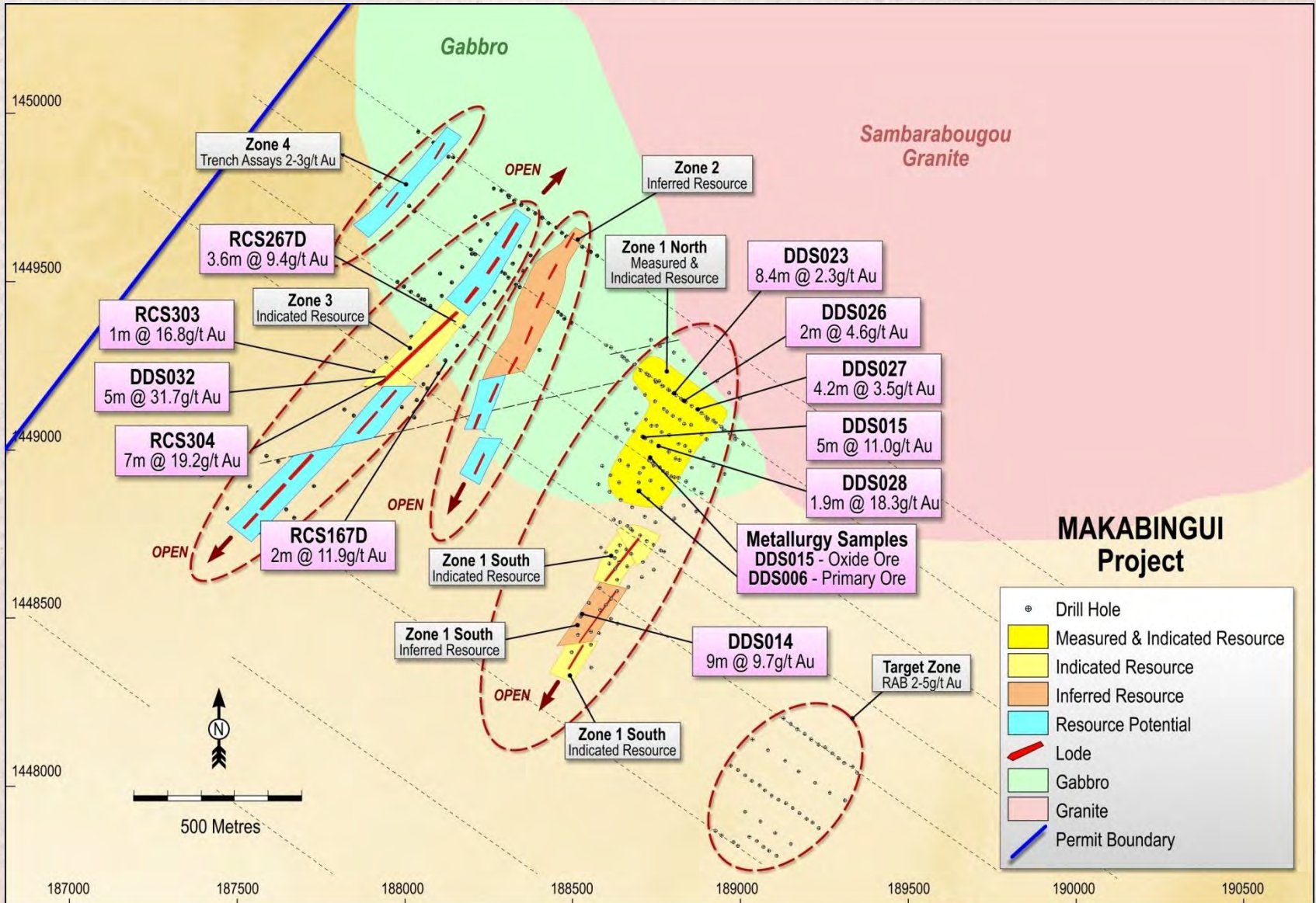


Makabingui Project- Resource

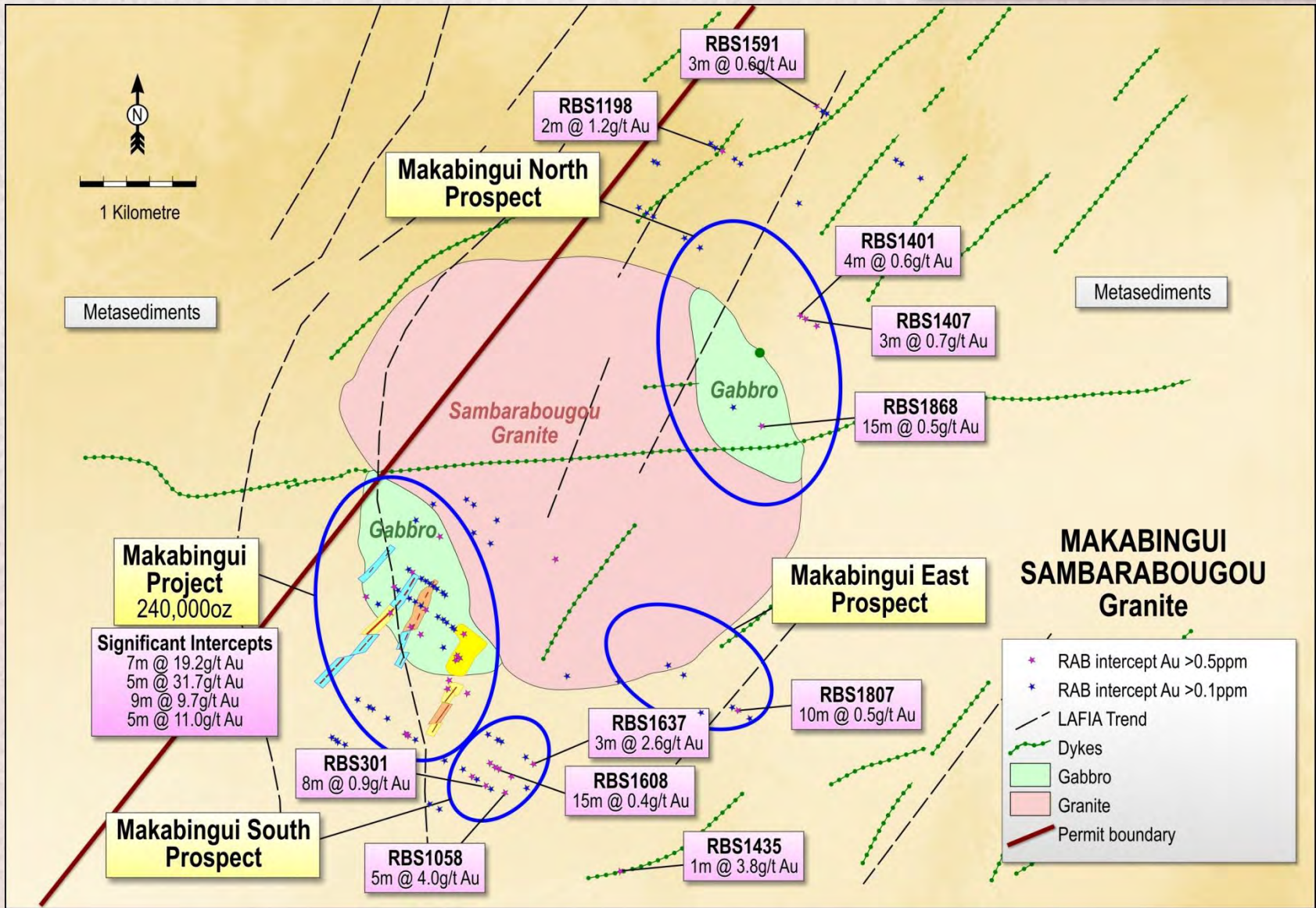
Location	Status	Cut-Off Grade (g/t)	Tonnes	Grade (g/t)	Total Gold (Au)
Zone 3	Indicated	0.5	350,000	6.1	69,000
Zone 1 South	Indicated	0.5	150,000	5.5	27,000
	Inferred	0.5	100,000	5	16,000
Zone 1 North	Measured	0.5	560,000	1.1	19,000
	Indicated	0.5	950,000	2	61,000
	Inferred	0.5	190,000	1.8	11,000
Zone 2	Inferred	0.5	970,000	1.2	37,000
Total	Measured	0.5	560,000	1.1	19,000
	Indicated	0.5	1,450,000	3.3	157,000
	Inferred	0.5	1,260,000	1.6	64,000
Total			3,270,000	2.3	240,000

- Part of a much larger system with additional resource potential.
- Cut-off grade of 0.5 g/t gold, top cut of 20 g/t gold.
- High metallurgical recoveries – 99%

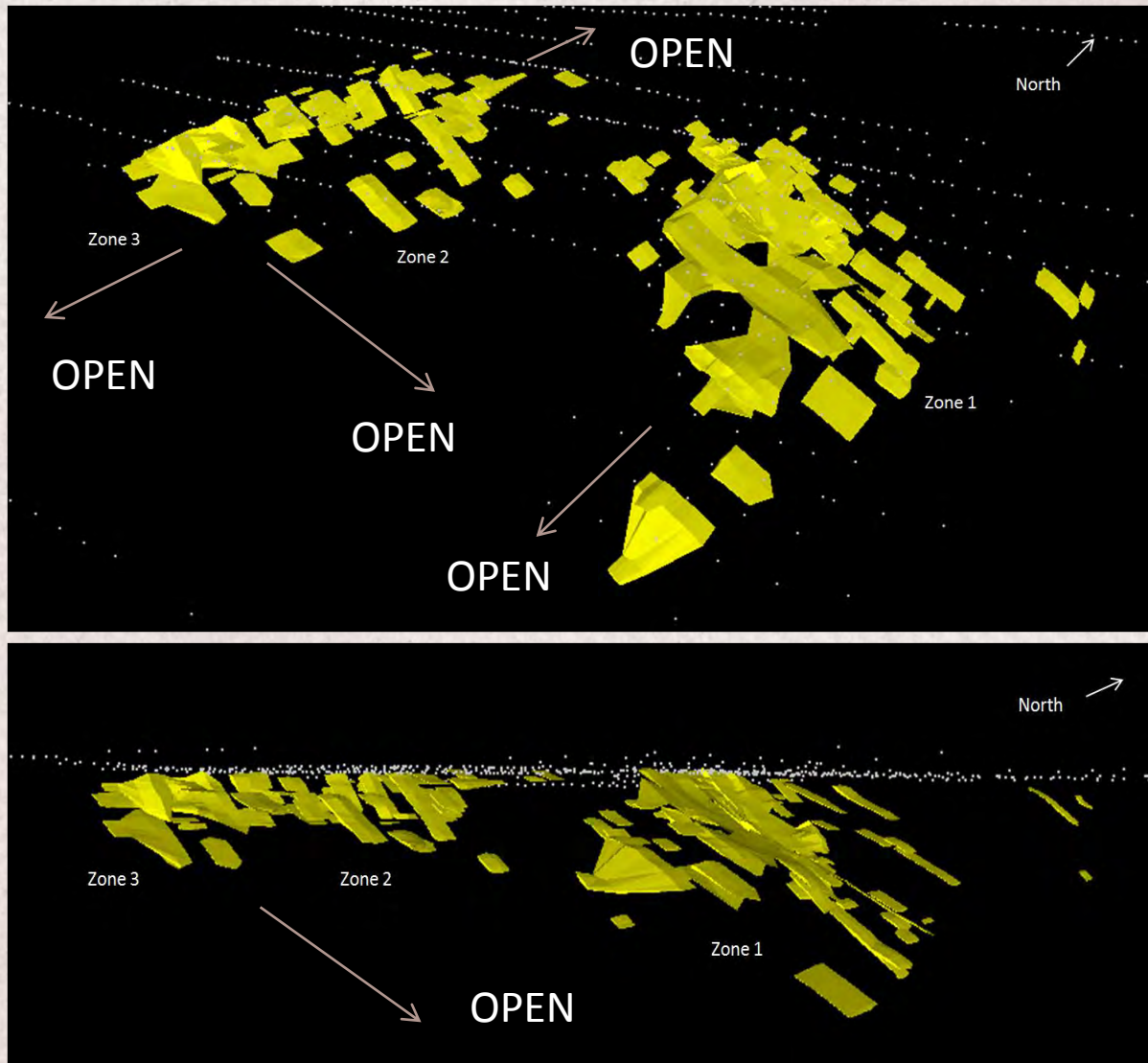
Makabingui Project – Resource Plan



Makabingui – The Larger Potential



Makabingui Project – 3D Model



Makabingui Project

Zone 1 resource extends over 900 metres and open to south along strike.

5 metres @ 11.0 g/t Au from 15 metres

9 metres @ 9.7 g/t Au from 58 metres

4 metres @ 7.8 g/t Au from 56 metres

Zone 3 resource extends over 300 metres and is open to the north, south and at depth.

5 metres @ 31.7 g/t Au from 51 metres

7 metres @ 19.2 g/t Au from 48 metres

8 metres @ 9.7 g/t Au from 46 metres

Zone 2 resource extends over 700 metres and is open to the south.

Open pit potential

Visible gold

Seen in both RC chips and diamond core across a number of holes

Sambarabougou Permit

Known granitoid intrusives with pressure shadows hosting quartz, carbonate, pyrite gold lodes.

Prospects include - Lafia, Lafia North, Missira and Makabingui North

Makabingui Project – Primary focus of exploration program

Resource drilling continuing to upgrade Resource – Q4 2011

Sambarabougou Granite

Key focus of current drilling program over next 9 months

Major shear zone identified

“Lafia Gold Corridor” – 40km strike length

Lafia North Prospect RAB and trenching

Results highly encouraging

Significant Lafia North RAB drilling results

8 metres @ 12.0 g/t Au

3 metres @ 12.2 g/t Au

12 metres @ 4.8 g/t Au

Moura Permit

Cluster of outcropping quartz, carbonate, pyrite stockwork gold zones.

Prospects include - Konkouto, Bennajiggi, Kawsara, Yoroya, Bountou, Sambali and Kawsara North

Extensive Soil Geochemistry and trenching

Identifying anomalous gold zones
Close to Loulo-Sadiola Gold Belt

Walk up RC/RAB targets

For current field season.

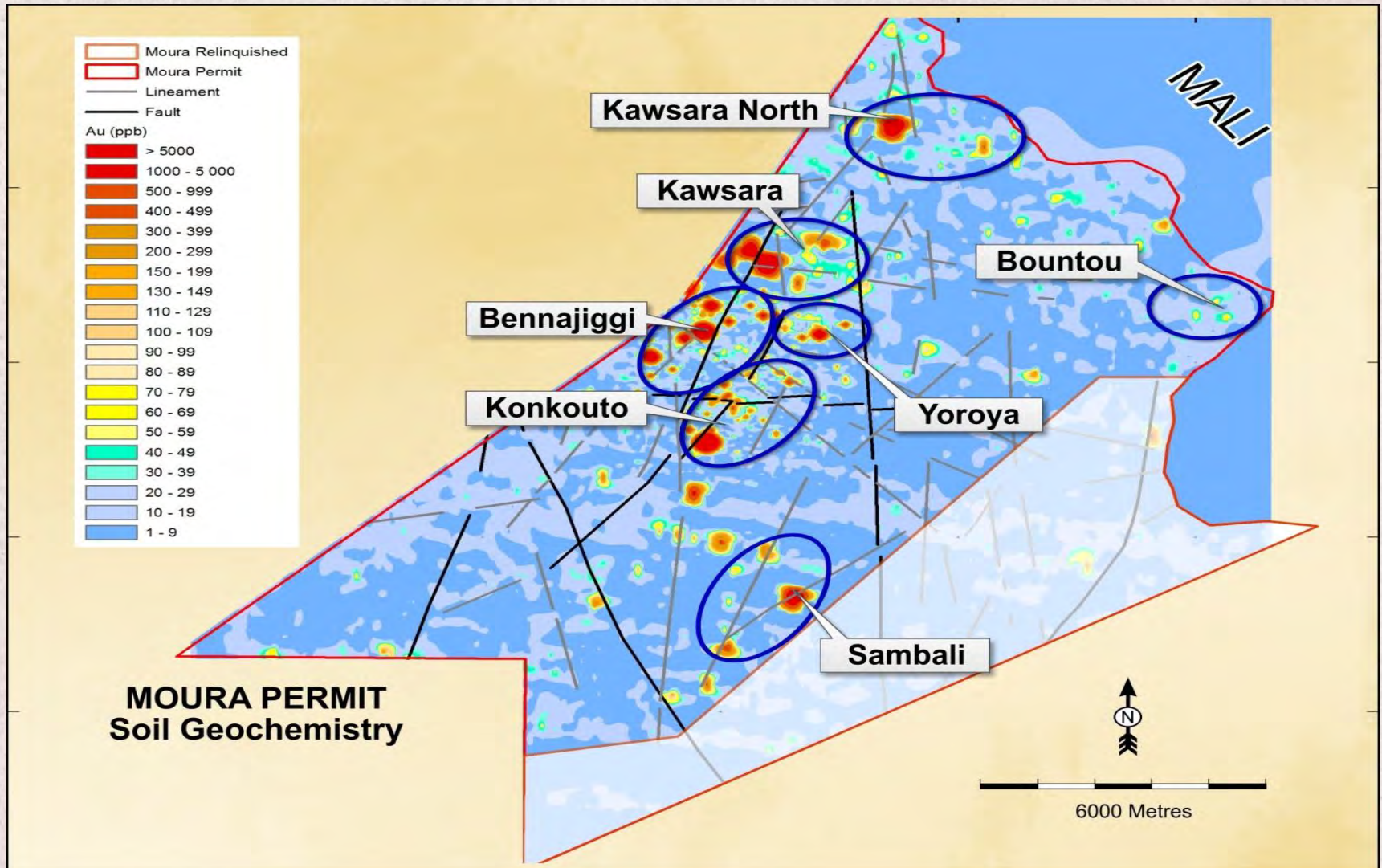
**Konkouto Prospect
Drill program Q4 - 2011**

Significant gold mineralisation associated with quartz veining.
Combined RC/DD Planned.

**Bennajiggi Prospect
Drill program Q4 - 2011**

Extensive artisanal workings.
Trench samples returned grades from 2.7 – 20.6g/t Au in quartz veins. Combined RC/DDH Planned.

Moura Permit – Prospects



Bounsankoba Permit

Steeply dipping quartz, carbonate, pyrite gold lodes associated with dominant North East strike.

Prospects include – Sekhoto and Massa Massa.

Sekhoto Prospect - Significant RAB drilling results

3 metres @ 3.5 g/t Au

10 metres @ 3.6 g/t Au

4 metres @ 2.7 g/t Au

Walk up RC drilling target

3,000 metres in Q4 - 2011

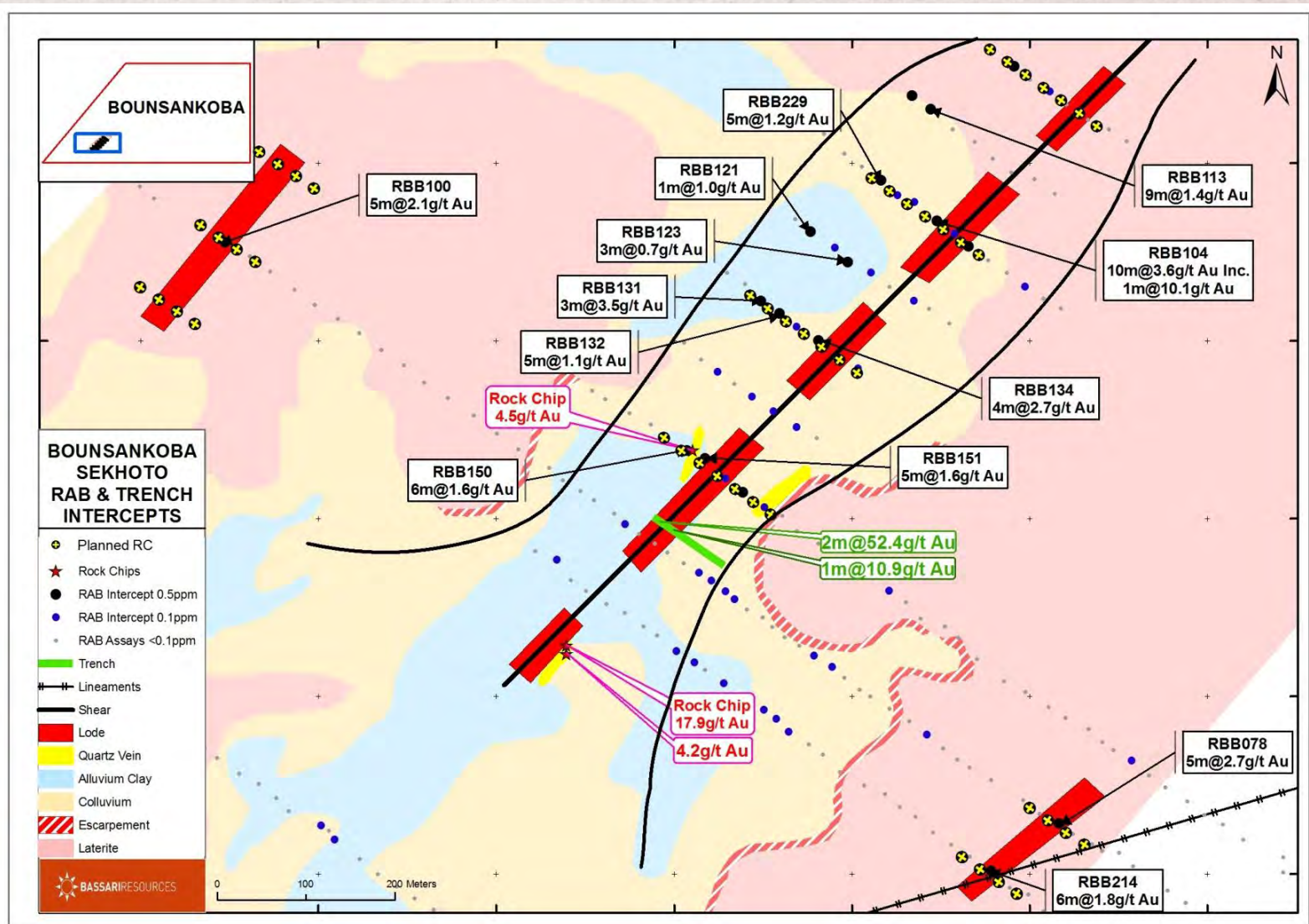
Massa Massa Prospect

5,000 metres of RAB drilling Q4 - 2011

Both Prospects

Within 40km long “Lafia Gold Corridor”

Sekhoto Prospect



Excellent Infrastructure

Significant infrastructure in place supporting exploration.

Fully serviced Douta Camp with medical centre within close proximity to Makabingui Project

All weather access roads to key Prospects. Sealed road from Dakar.

Douta Camp strategically located central to all permits.

Douta Alluvial Operations on Care & Maintenance



- **Sambarabougou Permit – 240k Gold Resource Ounces**

- **Makabingui Project – Primary Focus**

- **Grow Makabingui Gold Resource & unlock the larger potential around the Sambarabougou Granite.**

- **16,000 metres of combined RC/DD.**

- **15,000 metre RAB program**

- **Makabingui, Missira and Lafia**

- **Moura Permit**

- **5,000 metres of combined RC/DD.**

- **Konkoutou, Bennajiggi and Yoroya Prospects**

- **10,000 metre RAB program**

- **Bountou and Kawsara Prospects**

- **Bounsankoba Permit**

- **4,000 metres of combined RC/DD.**

- **Sekhoto Prospect**

- **5,000 metre RAB program at Massa Massa**

Board & Management

Dr David S. Tyrwhitt (Non-Exec Chairman)

Geologist with 50 years experience.

Former Chairman of the J.O.R.C Committee.

Director of Hawthorn Resources Ltd, Quantum Resources Ltd, Golden River Resources Corp. and Legend International Holding Inc.

Jozsef Patarica (MD/CEO)

Mining professional with over 18 years experience in mining industry.

Involved in management, project evaluation and operational roles in a number of mining centres across Australia.

Clive Wright (Non-Exec Director)

40 years experience in mining and related industries.

Former Director of Euratech Ltd, Eurapipe and Marplex Limited.

Jonathan Warner (Non-Exec Director – August 2011)

20 years experience covering corporate advisory, banking and legal fields in both international and domestic transactions. Specialises in mergers and acquisitions.

Previously senior associate of Allens Arthur Robinson and senior advisor in National Australia Bank.

Ian Riley (CFO/Company Secretary)

Chartered Accountant with 25 years experience.

Former company secretary of OnCard International Limited with operating businesses in China.

Corporate Information



SHARE REGISTER

		Substantial Shareholders	Number of Shares	% of Total shares
Share Price (A\$)	0.08			
Total Shares Outstanding (M)	234.1	Senegal Nominees SARL (Grouped)	24,613,712	10.5%
Listed Options (M)	19.5	Mr Lamine Diouf	10,719,163	4.6%
Unlisted Options (M)	5.8	UBS Nominees	8,876,666	3.8%
Market Capitalisation (A\$M)	18.7	Reama Pty Ltd	5,787,533	2.5%
Net Cash (A\$M) (as at 31 st March 2011)	2.0	Total	49,997,074	21.4%
Enterprise Value (A\$M)	16.7	Total no. of shares outstanding	234,097,128	
		Top 20 shareholders		34%
		Total no. of shareholders		1,612

Bassari Resources Ltd



Bassari Resources Ltd

Level 17

500 Collins Street

Melbourne Victoria 3000

Telephone

+61 3 9614 0600

Facsimile

+61 3 9614 0550

Email

admin@bassari.com.au

Website

www.bassari.com.au

Jozsef Patarica

MD/CEO



BASSARIRESOURCES

Investor Presentation

July 2011

Jozsef Patarica
Managing Director/CEO

